



## USING MOBILE APPS IN CLASSES (2018-2020)

4th International Meeting  
Kresna, Bulgaria, 17th – 23rd November, 2019  
USING MOBILE APPS IN CLASSES

# MIT APP INVENTOR WORKSHOP

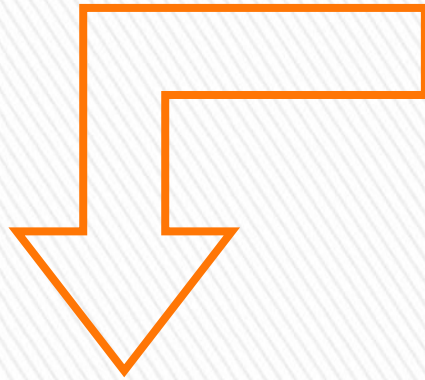
[RUIBAPTISTA@ESBARCELINHOS.PT](mailto:RUIBAPTISTA@ESBARCELINHOS.PT)

# MIT App Inventor



- » Easy for learners to create mobile apps for Android smart phones
- » Visually fitting together puzzle piece-shaped "programming blocks"
- » Web-based
- » 1st quarter of 2012, MIT Center for Mobile Learning launched App Inventor service for general public access

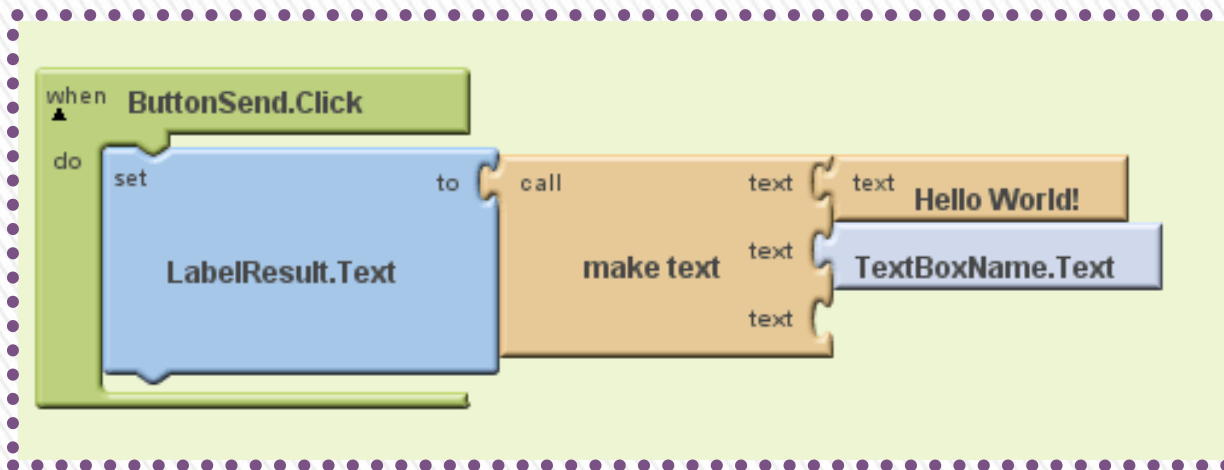
# Features



```
public class HelloWorld {  
    public static void main(String[] args) {  
        System.out.println("Hello, World");  
    }  
}
```

```
Private Sub Command1_Click()  
    MsgBox "Hello, World!"  
End Sub
```

## Programming Blocks





- » Macintosh (with Intel processor): Mac OS X 10.5, 10.6 or higher
- » Windows: Windows XP, Windows Vista, Windows 7, Windows 8
- » GNU/Linux: Ubuntu 8+, Debian 5+
- » 1GB RAM (more is better)
- » 500MB hard disk space (for offline version)

# System requirements

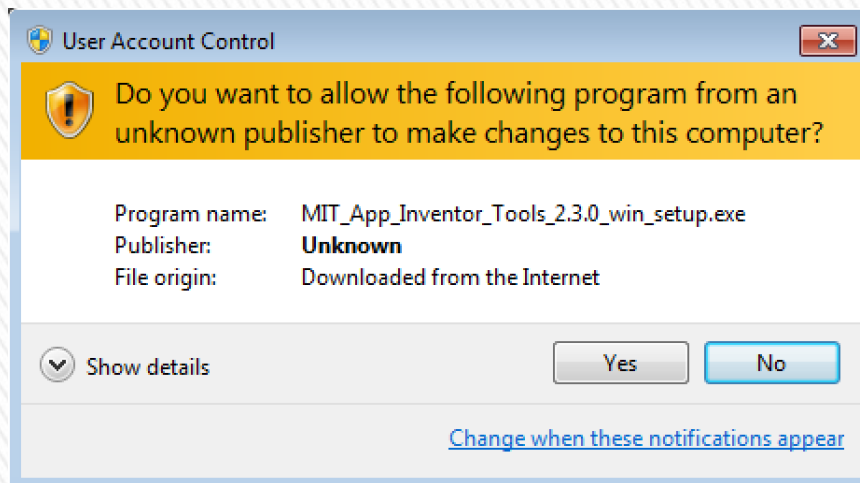
- » Mozilla Firefox 3.6 or higher
- » Apple Safari 5.0 or higher
- » Google Chrome 4.0 or higher
- » Microsoft Internet Explorer 7 or higher
- » Java 6 or higher

# System requirements



# Get started

- » [Download](#) App Inventor Setup software package
- » Locate the file MIT\_Appinventor\_Tools\_2.3.0 (~80 MB)
- » Click through the steps of the installer



Download Link



## WiFi Development - MIT App Inventor Release v1.33

- » Using WiFi to deploy your development
- » Benefits→
- » Easy and fast
- » No driver required
- » Just make sure your Android Device and Developing Computer connected to the same Local Area Network (LAN)

# New Feature

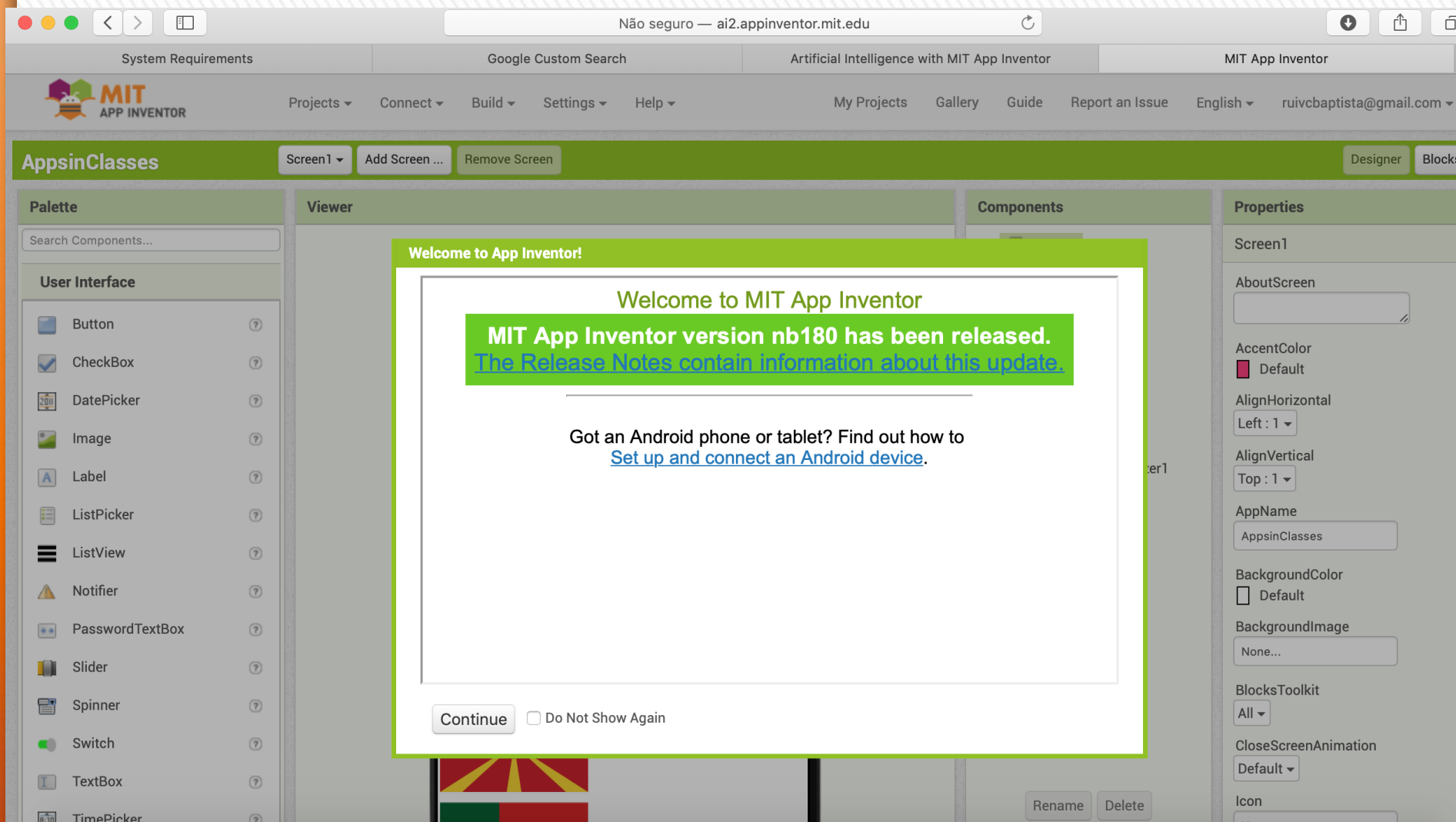




- » Download an App on an Android device
- » Go to [Google Play Store](#)
- » Search for “MIT AICompanion”
- » OR
- » Download the APK file from the following
- » `http://appinventor.mit.edu/download/`

# 1. How does it work?

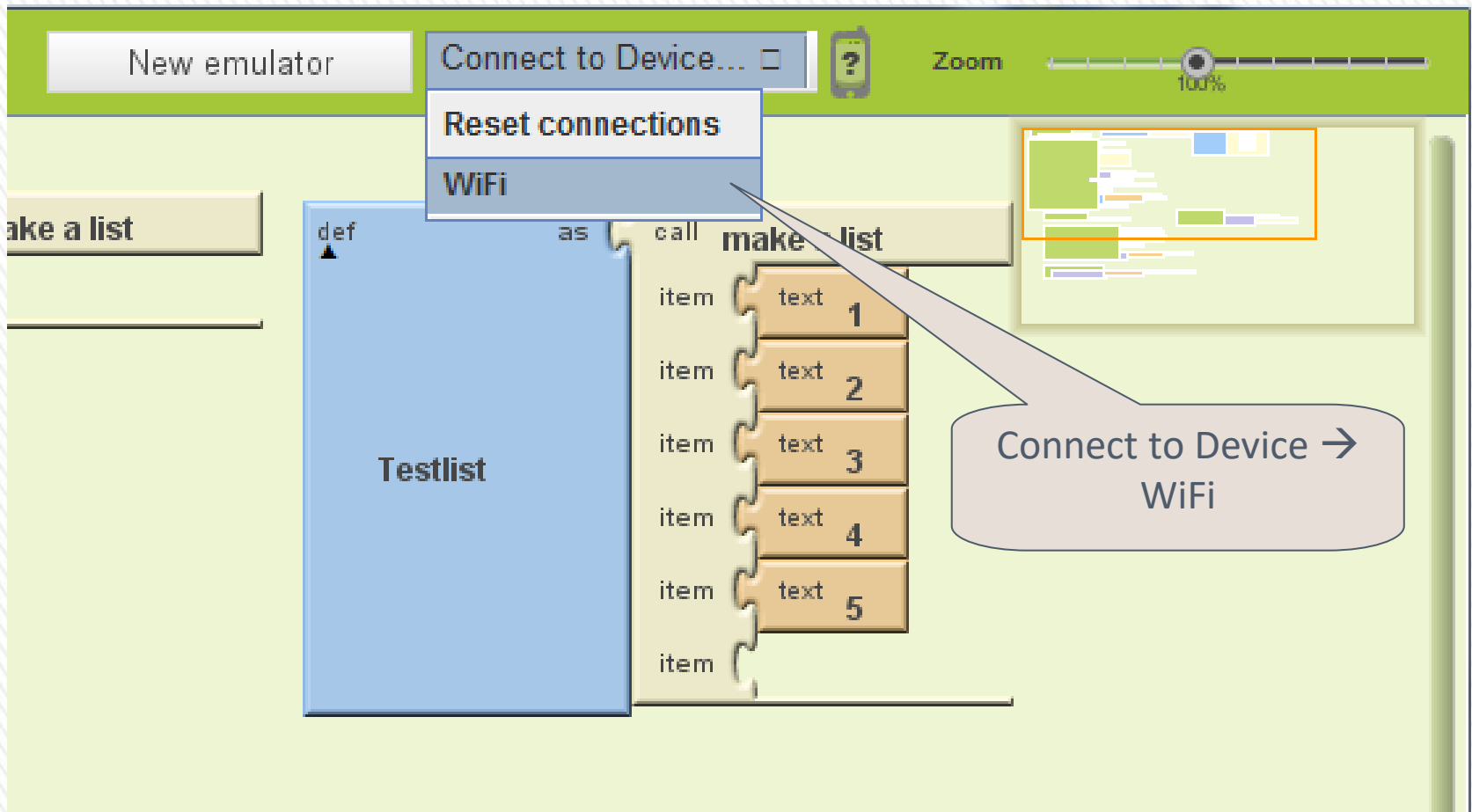




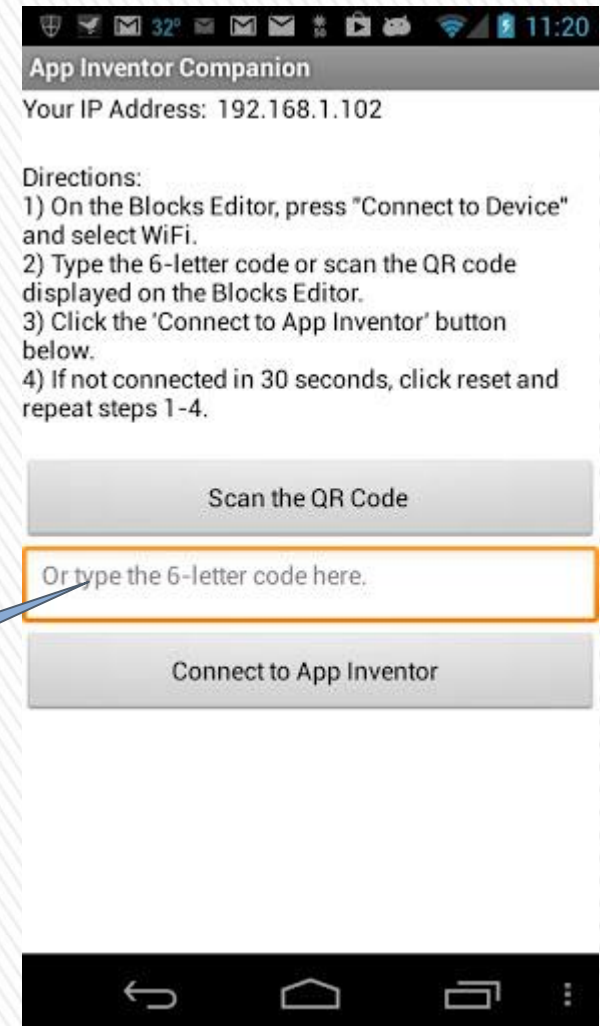
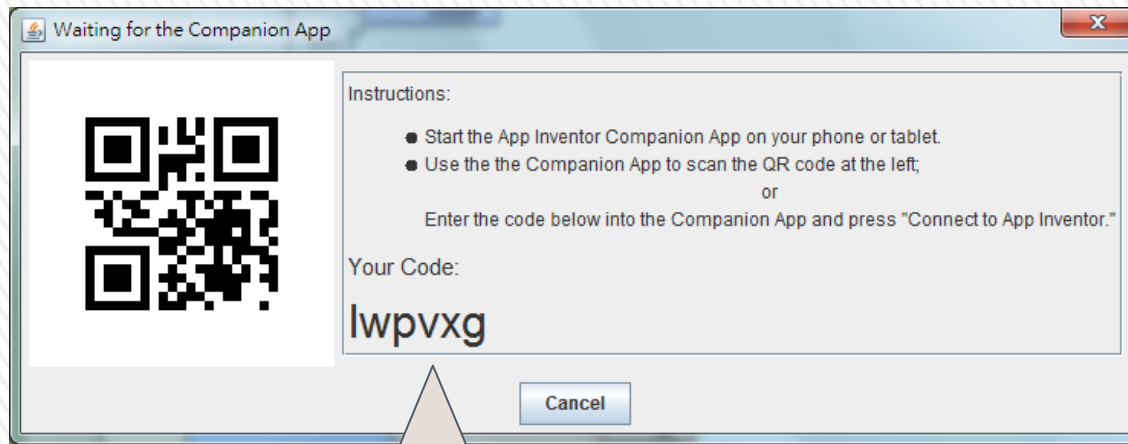
## 2. How does it work?







# 3. How does it work?



Enter the pass code to  
"MIT AICompanion"  
or  
It works with your Barcode  
scanner also!

### 3. How does it work?



Your Apps will be shown on your  
screen

- » Not an official release!
- » Download App Inventor Setup software package
- » Click through the steps of the installer  
`AppInventor_Setup_Installer_v_1_2.exe`
- » Download zip file from Google forum

# Standalone machine



» <https://sourceforge.net/projects/ai4a-configs/files/V1.4.6/>

Download Link



# Standalone machine